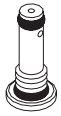
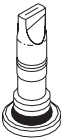


PARTS TO FIT THE CENTURY PLUS HANDPIECE CONTROL BLOCK



**CARTRIDGE,
AIR BLEED VALVE** **NEW**
RPI Part #ADV162
OEM Part #38-0517-00

- 3 per package
- Brass cartridge with o-rings
- Fits: Century Plus Handpiece Control Block



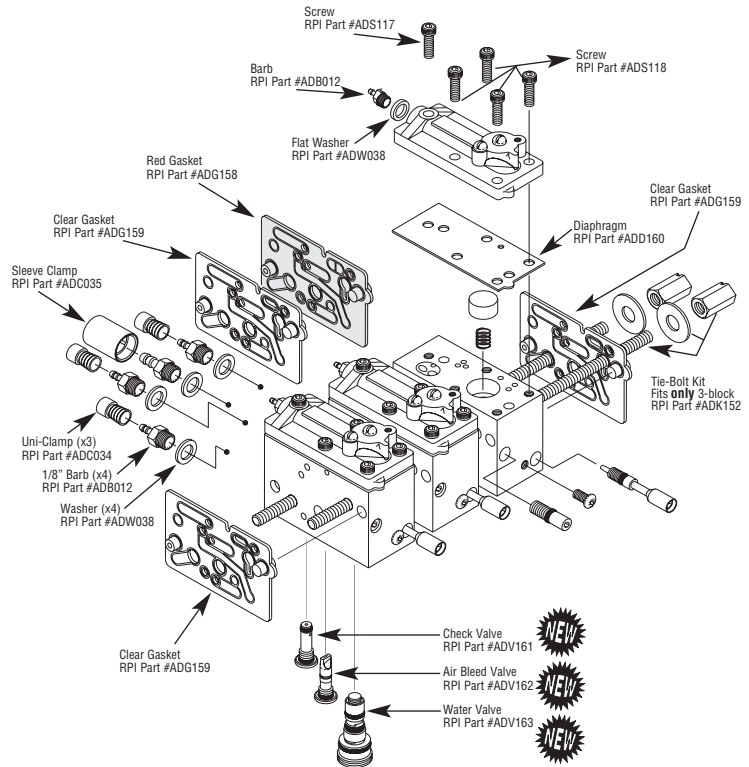
**CARTRIDGE,
CHECK VALVE** **NEW**
RPI Part #ADV161
OEM Part #38-0518-00

- 3 per package
- Brass cartridge with blue top, rubber duckbill and o-ring
- Fits: Century Plus Handpiece Control Block

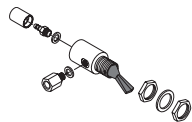


**CARTRIDGE,
WATER VALVE** **NEW**
RPI Part #ADV163
OEM Part #38-0520-00

- 3 per package
- Brass cartridge with red top and o-rings
- Fits: Century Plus Handpiece Control Block

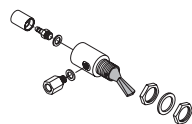


PARTS TO FIT DENTAL CHAIR SYSTEMS WITH CUP FILL TOWERS



CUP FILL TOGGLE VALVE (BLACK)* **NEW**
RPI Part #ADV179
OEM Part #33-0008-00

- Fits: All cup fill towers prior to 1982

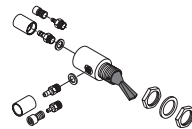


CUP FILL TOGGLE VALVE (GRAY)* **NEW**
RPI Part #ADV180
OEM Part #N/A

- Fits: All cup fill towers prior to 1982

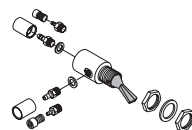
* Includes (2) Washer (RPI Part #ADW038), Sleeve Clamp (RPI Part #ADC035), Barb 1/4" 10-32 (RPI Part #ADB011), spout filler 10-32 hex cup and panel mounting hardware.

PARTS TO FIT DENTAL CHAIR SYSTEMS WITH ALL WATER PURGE AND AIR BRAKE SYSTEMS



2 WAY MOMENTARY TOGGLE VALVE (BLACK)* **NEW**
RPI Part #ADV181
OEM Part #33-0034-01

- Fits: All water purge and air brake systems



2 WAY MOMENTARY TOGGLE VALVE (GRAY)* **NEW**
RPI Part #ADV182
OEM Part #N/A

- Fits: All water purge and air brake systems

* Includes (2) Barb 1/8" 10-32 (RPI Part #ADB012), (2) Barb 1/4" 10-32 (RPI Part #ADB011), (2) Washer (RPI Part #ADW038), (2) Sleeve Clamp (RPI Part #ADC035), (2) Uni-clamp (RPI Part #ADC034) and panel mounting hardware.



replacement parts industries, inc.

CALL (800) 221-9723 • FAX (818) 882-7028 • EMAIL order@rpiparts.com • WEBSITE www.rpiparts.com

The above parts are manufactured by Replacement Parts Industries, Inc. to fit A-dec equipment. All product names used in this document are trademarks or registered trademarks of their respective holders. 07/03 with corrections.