

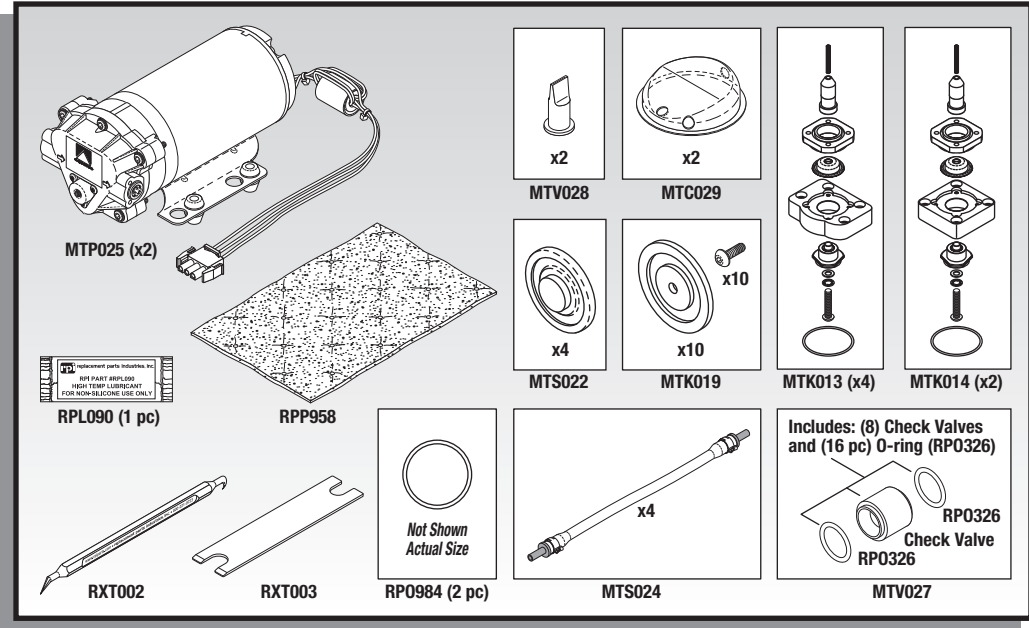
Models: Advantage Plus®, CER Optima®, DSD-91E®, DSD-201®, DSD Edge®, & SSD-102®

**NEW PM KITS
AND MORE TO FIT**

MEDIVATORS® DSD-201® & DSD EDGE® AER SYSTEMS!



**FITS
DSD-201!**



RPI Part #MTK009
OEM Part #78400-722

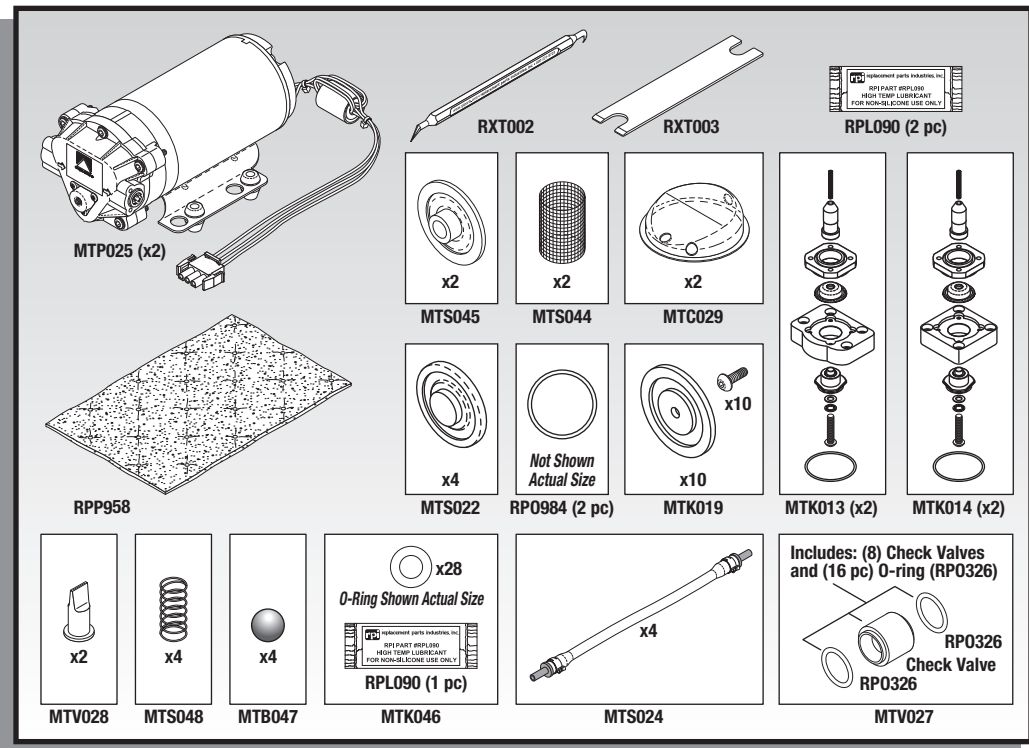
PM KIT

- Annual PM kit
- Includes all parts as shown
- For use on DSD-201 machines that have been upgraded to the 3/4" drain valve (OEM Part #78401-050 which is also included in the PM Kit #78400-724) or have a DSD-201 with serial #649904-064 and above.

Models: DSD-201



**FITS
DSD EDGE!**



RPI Part #MTK033
OEM Part #78401-176

PM KIT

- Annual PM Kit
- Includes all parts as shown

Models: DSD Edge



replacement parts industries, inc.

CALL (800) 221-9723 • FAX (818) 882-7028 • EMAIL order@ripiparts.com • WEBSITE www.ripiparts.com

The above parts are manufactured by Replacement Parts Industries, Inc. to fit the equipment noted. All product names used in this document are trademarks or registered trademarks of their respective holders. Flyer Code 1705MT Rd2 Sub Updated 04/18

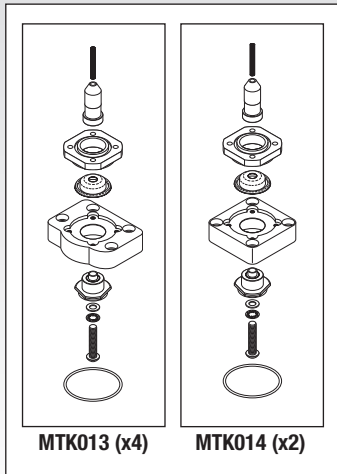
RPI Part #MTK012
OEM Part #78400-660



BASIN VALVE REBUILD KIT

- See **Note** below.
- Includes: (4) Valve Rebuild Kit (Drain/Return) (RPI Part #MTK013) and (2) Valve Rebuild Kit (Overflow) (RPI Part #MTK014)

Fits: 3/4" Drain Valve Manifold
Models: DSD-201



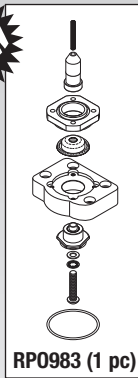
RPI Part #MTK013
OEM Part #78400-658



VALVE REBUILD KIT (DRAIN/RETURN)

- Valve #10 and #11
- See **Note** below. Also used on all DSD-Edge units.
- Includes all parts as shown

Fits: 3/4" Drain Valve Manifold
Models: DSD-201 & DSD Edge



RP0983 (1 pc)

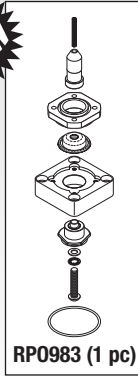
RPI Part #MTK014
OEM Part #78400-659



VALVE REBUILD KIT (OVERFLOW)

- Valve #9
- See **Note** below. Also used on all DSD-Edge units.
- Includes all parts as shown

Fits: 3/4" Drain Valve Manifold
Models: DSD-201 & DSD Edge



RP0983 (1 pc)

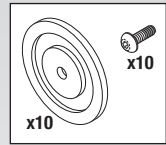
RPI Part #MTK019
OEM Part #78401-261/78398-538



AIR VALVE DIAPHRAGM KIT

- 10 per package
- Material: Diaphragm is custom formulated elastomer, screw is precoated 316 stainless steel.

Fits: Air Valve Assemblies
Models: DSD-201 & DSD Edge



RPI Part #MTS022
OEM Part #MV01-0035



VALVE SEAL (ALCOHOL AND DETERGENT)

- 4 per package.
- Material: Viton®

Fits: Alcohol/Detergent Valve
Models: DSD-201 & DSD Edge



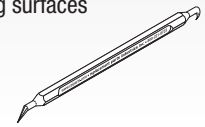
RPI Part #RXT002
OEM Part #47049-687



O-RING REMOVAL TOOL

- Made from Nylon® to avoid scratching delicate O-ring sealing surfaces
- Size: 5.5"

Models: DSD-201 & DSD Edge

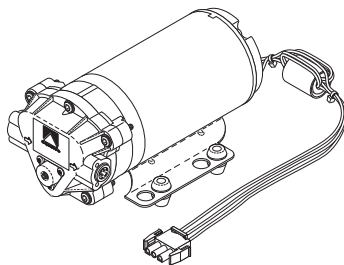


NOTE: For use on DSD-201 machines that have been upgraded to the 3/4" drain valve (OEM #78401-050 which is also included in the PM Kit #78400-724) or have a DSD-201 with serial #649904-064 and above.

RPI Part #MTP025
OEM Part #78400-689

PUMP (DISINFECTANT)

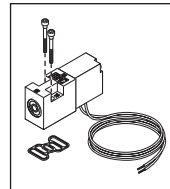
- 115 VAC, 60 Hz
- Fits:** Chassis
- Models:** DSD-201 & DSD Edge



RPI Part #MTV030
OEM Part #41600-109

SOLENOID VALVE (MAC)

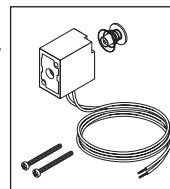
- Includes: Gasket and mounting screws
- Fits:** Air Delivery System
- Models:** DSD-201 & DSD Edge



RPI Part #MTC032
OEM Part # (No OEM Part # Available)

COIL (SOLENOID VALVE - MAC)

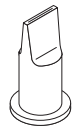
- Includes: Plunger assembly and mounting screws
- Fits:** Air Delivery System
- Models:** DSD-201 & DSD Edge



RPI Part #MTV028
OEM Part #MV01-0040

CHECK VALVE (ALCOHOL AND DETERGENT)

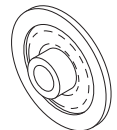
- 2 per package
- Fits:** Alcohol and Detergent Assembly
- Models:** Advantage Plus, DSD-201 & DSD Edge



RPI Part #MTS045
OEM Part #41013-001

SEAL (SAMPLE PORT)

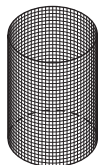
- 2 per package
- Fits:** Sample Port Valve
- Models:** DSD Edge



RPI Part #MTS044
OEM Part #43100-254

STRAINER

- 2 per package
- Fits:** Disinfectant Manifold
- Models:** DSD Edge



RPI Part #MTS048
OEM Part #47049-415

SPRING

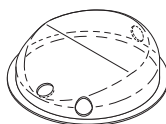
- 4 per package
- Fits:** SSG Dosing Assembly
- Models:** Advantage Plus & DSD Edge



RPI Part #MTC029
OEM Part #MC13-0015

COVER (BASIN SENSOR)

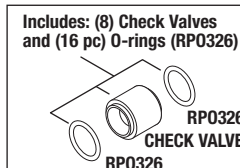
- 2 per package
- Fits:** Basin Sensor
- Models:** DSD-201 & DSD Edge



RPI Part #MTV027
OEM Part #78401-260

CHECK VALVE

- Includes all parts as shown
- Fits:** Fluid Manifold
- Models:** DSD-201 & DSD Edge



RPI Part #MTB047
OEM Part #47049-658 & 47049-416

FLOAT BALL

- 4 per package
- Fits:** SSG Dosing Assembly
- Models:** Advantage Plus & DSD Edge



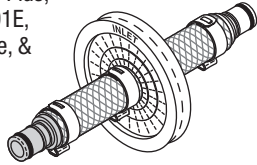


RPI Part #MTA001
OEM Part #MF01-0028

AIR FILTER ASSEMBLY

- 8 per package; 0.2 micron
- Color coded 1/4" flow male quick couplings (Blue-Inlet; White-Outlet)

Fits: Air Compressor Line
Models: Advantage Plus, CER Optima, DSD-91E, DSD-201, DSD Edge, & SSD-102

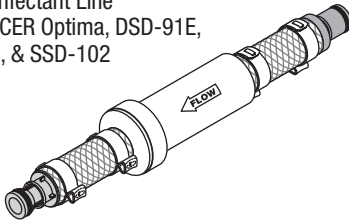


RPI Part #MTA002
OEM Part #MF01-0011

DISINFECTANT FILTER ASSEMBLY

- 12 per package; 65 micron
- Color coded 1/4" flow male quick couplings (Red-Inlet; Grey-Outlet)

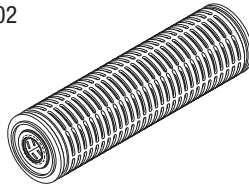
Fits: Disinfectant Line
Models: CER Optima, DSD-91E, DSD-201, & SSD-102



RPI Part #MTF004
OEM Part #MF01-0015

PREFILTER CARTRIDGE (0.45 MICRON ABSOLUTE)

Fits: Incoming Water Line
Models: DSD-91E, DSD-201, DSD Edge, & SSD-102



RPI Part #MTF005
OEM Part #MF01-0014

PREFILTER (1 MICRON)

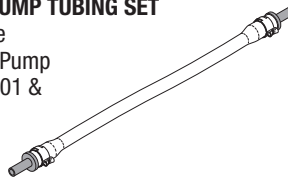
Fits: Pre Filter Assembly
Models: CER Optima, DSD-91E, DSD-201, DSD Edge, & SSD-102



RPI Part #MTS024
OEM Part #MT010-0500

PERISTALTIC PUMP TUBING SET

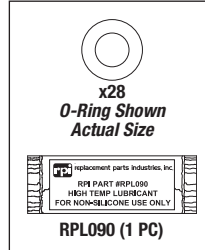
- 4 per package
- Fits:** Peristaltic Pump
- Models:** DSD-201 & DSD Edge



RPI Part #MTK046
OEM Part #43100-302

O-RING KIT

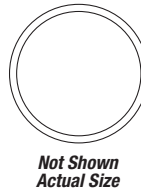
- Includes all parts as shown
- Fits:** SSG Reservoir
- Models:** Advantage Plus & DSD Edge



RPI Part #RPO983
OEM Part #43100-224

O-RING - 3/pkg

- Size: 1.799" ID x 2.005" OD x .103" C/S
- Material: Viton®, 75 Duro
- Fits:** Drain Manifold Valves
- Models:** DSD-201 & DSD Edge



RPI Part #RPO984
OEM Part #M001-0004

O-RING - 6/pkg

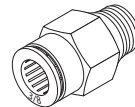
- Size: 1.176" ID x 1.316" OD x 0.70" C/S
- Material: Viton®, 75 Duro
- Fits:** Drain Manifold
- Models:** DSD-201 & DSD Edge



RPI Part #RXF012
OEM Part # (No OEM Part # Available)

MALE CONNECTOR (3/8" PUSH-IN x 1/4" MPT)

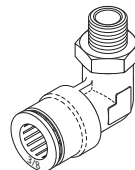
- 2 per package
- Fits:** Air Tank Assembly
- Models:** DSD-201 & DSD Edge



RPI Part #RXF013
OEM Part # (No OEM Part # Available)

ELBOW FITTING (3/8" PUSH-IN x 1/8" MPT)

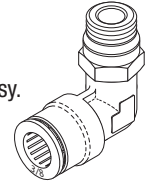
- 2 per package
- Fits:** 4 Station Air/Valve Manifold
- Models:** DSD-201 & DSD Edge



RPI Part #RXF014
OEM Part # (No OEM Part # Available)

ELBOW FITTING (3/8" PUSH-IN x 1/4" MPT)

- 2 per package
- Fits:** MAC Sol. Valve Manifold Assy.
- Models:** DSD-201 & DSD Edge



RPI Part #RXF015
OEM Part # (No OEM Part # Available)

MALE CONNECTOR (5/32" PUSH-IN x 1/8" MPT)

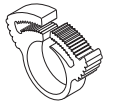
- 8 per package
- Fits:** MAC Valve Assemblies
- Models:** DSD-201 & DSD Edge



RPI Part #RXC021
OEM Part # (No OEM Part # Available)

KWIK™ CLAMP (.59" - .67" DIA)

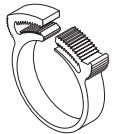
- 6 per package
- Fits:** 5/8" OD Tubing
- Models:** DSD-201 & DSD Edge



RPI Part #RXC022
OEM Part # (No OEM Part # Available)

KWIK™ CLAMP (1.26" - 1.37" DIA)

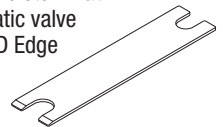
- 6 per package
- Fits:** 1-1/4" OD Tubing
- Models:** DSD-201 & DSD Edge



RPI Part #RXT003
OEM Part #MW03-0002

WRENCH (LOW PROFILE)

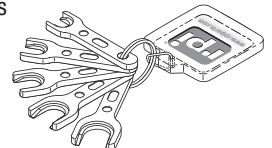
- Used to secure the valve stem flat on Medivators pneumatic valve
- Models:** DSD-201 & DSD Edge



RPI Part #RXT004
OEM Part #47049-157

COLLET RELEASE WRENCH SET

- John Guest collet wrench set
- Sizes: 3/16", 1/4", 5/16", 3/8" and 1/2"
- Fits:** Tubing Fittings
- Models:** DSD-201 & DSD Edge



TUBING	RPI Part #	OEM Part #	Description	fits DSD-201	fits DSD Edge
<p>Sold by the foot. Reel not included</p>	RPT879	No OEM Part # Available	TUBING (3/8" ID x .594" OD CLEAR BRAIDED)	•	•
	RPT959	MT01-0024	TUBING (1/4" ID x 3/8" OD CLEAR)	•	•
	RPT987	MT01-0000 (4" lg.)	TUBING (1" ID x 1-1/4" OD CLEAR)	•	•
	RXT009	MT01-0026	TUBING (.170" ID x 1/4" OD NATURAL TRANSLUCENT)	•	•
	RXT010	MT01-0025	TUBING (.106" ID x 5/32" OD BLACK)	•	•
	RXT011	47509-390	TUBING (.106" ID x 5/32" OD ORANGE)	•	•



replacement parts industries, inc.

20338 Corisco Street • Chatsworth, California • 91311

PRESORTED STANDARD
U.S. POSTAGE PAID
VAN NUYS, CA
PERMIT NO. 2399

ADDRESS SERVICES REQUESTED

PM Kits and more to fit Medivators® DSD-201® & DSD Edge® AER Systems!

**COMPLETE LIST
OF PARTS TO FIT**

**MEDIVATORS®
AUTOMATED ENDOSCOPE REPROCESSORS!**

RPI Part #	OEM Part #	Description	Advantage Plus	CER Optima	DSD-91E	DSD-201	DSD Edge	SSD-102
MTA001	MF01-0028	Air Filter Assembly - 8/PKG	•	•	•	•	•	•
MTA002	MF01-0011	Disinfectant Filter Assembly - 12/PKG		•	•	•		•
MTB047	47049-658 & 47049-416	Float Ball - 4/PKG	•				•	
MTC029	MC13-0015	Cover (Basin Sensor) - 2/PKG				•	•	
MTC032	No OEM Part # Available	Coil (Solenoid Valve - MAC)				•	•	
MTF004	MF01-0015	Prefilter Cartridge (0.45 Micron Absolute)			•	•	•	•
MTF005	MF01-0014	Prefilter (1 Micron)		•	•	•	•	•
MTK009	78400-722	PM Kit				•		
MTK012	78400-660	Basin Valve Rebuild Kit				•		
MTK013	78400-658	Valve Rebuild Kit (Drain/Return)				•	•	
MTK014	78400-659	Valve Rebuild Kit (Overflow)				•	•	
MTK019	78401-261 & 78398-538	Air Valve Diaphragm Kit - 10/PKG				•	•	
MTK033	78401-176	PM Kit					•	
MTK046	43100-302	O-Ring Kit	•				•	
MTP025	78400-689	Pump (Disinfectant)				•	•	
MTS022	MV01-0035	Valve Seal (Alcohol and Detergent) - 4/PKG				•	•	
MTS024	MT010-0500	Peristaltic Pump Tubing Set - 4/PKG				•	•	
MTS044	43100-254	Strainer - 2/PKG					•	
MTS045	41013-001	Seal (Sample Port) - 2/PKG					•	
MTS048	47049-415	Spring - 4/PKG	•				•	
MTV027	78401-260	Check Valve - 8/PKG				•	•	
MTV028	MV01-0040	Check Valve (Alcohol and Detergent) - 2/PKG	•			•	•	
MTV030	41600-109	Solenoid Valve (MAC)				•	•	
RPO983	43100-224	O-Ring - 3/PKG				•	•	
RPO984	MO01-0004	O-Ring - 6/PKG				•	•	
RPT879	No OEM Part # Available	Tubing (3/8" ID x .594" OD Clear Braided) - per foot				•	•	
RPT959	MT01-0024	Tubing (1/4" ID x 3/8" OD Clear) - per foot				•	•	
RPT987	MT01-0000 (4" lg.)	Tubing (1" ID x 1-1/4" OD Clear) - per foot				•	•	
RXC021	No OEM Part # Available	Kwik™ Clamp (.59" - .67" dia.) - 6/PKG				•	•	
RXC022	No OEM Part # Available	Kwik™ Clamp (1.26" - 1.37" dia.) - 6/PKG				•	•	
RXF012	No OEM Part # Available	Male Connector (3/8" Push-In x 1/4" MPT) - 2/PKG				•	•	
RXF013	No OEM Part # Available	Elbow Fitting (3/8" Push-In x 1/8" MPT) - 2/PKG				•	•	
RXF014	No OEM Part # Available	Elbow Fitting (3/8" Push-In x 1/4" MPT) - 2/PKG				•	•	
RXF015	No OEM Part # Available	Male Connector (5/32" Push-In x 1/8" MPT) - 8/PKG				•	•	
RXT002	47049-687	O-Ring Removal Tool				•	•	
RXT003	MW03-0002	Wrench (Low Profile)				•	•	
RXT004	47049-157	Collet Release Wrench Set				•	•	
RXT009	MT01-0026	Tubing (.170" ID x 1/4" OD Natural Translucent) - per foot				•	•	
RXT010	MT01-0025	Tubing (.106" ID x 5/32" OD Black) - per foot				•	•	
RXT011	47509-390	Tubing (.106" ID x 5/32" OD Orange) - per foot				•	•	