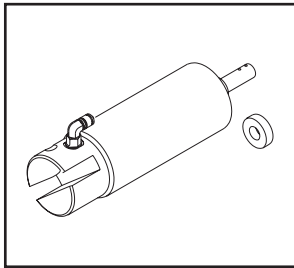
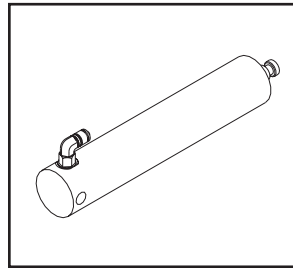


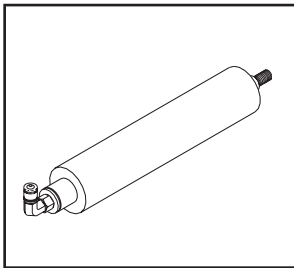
PARTS TO FIT
CASCADE AND DECADE HYDRAULIC DENTAL CHAIRS PLUS HYDRAULIC FLUID



LIFT CYLINDER KIT
RPI Part #ADC176
OEM Part #61-1287-00
• Includes cylinder and collar
• Uses Hydraulic fluid (RPI Part #RPF449)
Fits: Between baseplate and upper structure of chair
Models: Cascade 1040; Decade 1010, 1011, 1015, 1020 and 1021



TILT CYLINDER
RPI Part #ADC177
OEM Part #61-2050-00
• Uses Hydraulic fluid (RPI Part #RPF449)
Fits: Link Assembly
Model: Cascade 1040



TILT CYLINDER
RPI Part #ADC178
OEM Part #61-1267-00
• Uses Hydraulic fluid (RPI Part #RPF449)
Fits: Link Assembly
Models: Decade 1010, 1011, 1015, 1020 and 1021

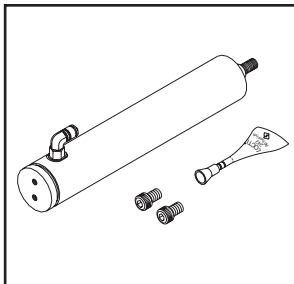


HYDRAULIC FLUID
RPI Part #RPF449
OEM Part #61-0197-00
• 16 fluid ounces
• Shell Tellus T46 Oil (ISO 46)
For: Pump Reservoir
Models: Cascade, Decade, Priority 1005 and most hydraulic dental chairs

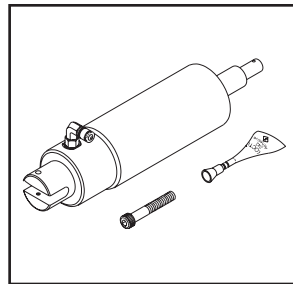


HYDRAULIC FLUID ALSO AVAILABLE BY THE CASE
(RPI Part #RPF453 - 12 (16 oz.) BOTTLES PER CASE)

PARTS TO FIT
PRIORITY 1005 HYDRAULIC DENTAL CHAIR PLUS HYDRAULIC FLUID



TILT CYLINDER KIT
RPI Part #ADC174
OEM Part #61-0860-00
• Includes cylinder, (2) 1/4-20 x 1/2" LG Stainless steel socket head cap screw and Threadlocker 242 (RPI Part #RPA032)
• Uses Hydraulic fluid (RPI Part #RPF449)
Fits: Link Assembly
Model: Priority 1005



LIFT CYLINDER KIT
RPI Part #ADC175
OEM Part #61-0850-00
• Includes cylinder, 1/4-20 x 1-3/4" LG Stainless steel socket head cap screw and Threadlocker 242 (RPI Part #RPA032)
• Uses Hydraulic fluid (RPI Part #RPF449)
Fits: Between baseplate and upper structure of chair
Model: Priority 1005



HYDRAULIC FLUID
RPI Part #RPF449
OEM Part #61-0197-00
• 16 fluid ounces
• Shell Tellus T46 Oil (ISO 46)
For: Pump Reservoir
Models: Cascade, Decade, Priority 1005 and most hydraulic dental chairs



HYDRAULIC FLUID ALSO AVAILABLE BY THE CASE
(RPI Part #RPF453 - 12 (16 oz.) BOTTLES PER CASE)

"TIE UP" LOOSE ENDS WITH RPI CABLE TIES!

RPI Part #	LENGTH	COLOR	QTY PER PKG
RPT083	4"	WHITE	25 per pkg
RPT396	4"	GRAY	25 per pkg
RPT278*	8"	WHITE	25 per pkg
RPT084	8"	WHITE	25 per pkg
RPT397	8"	GRAY	25 per pkg
RPT085	8"	BLACK	25 per pkg
RPT279*	8"	BLACK	25 per pkg
RPT398	12"	GRAY	25 per pkg
RPT375	12"	BLACK	25 per pkg

* Cable Ties with #10 mounting hole.

BE SURE TO VISIT WWW.RPIPARTS.COM TO SEE ALL OUR PARTS TO FIT DENTAL CHAIRS!