



... Proud to be a Healthcare Components Group company ...



HEALTHCARE  
Components Group

STRYKER

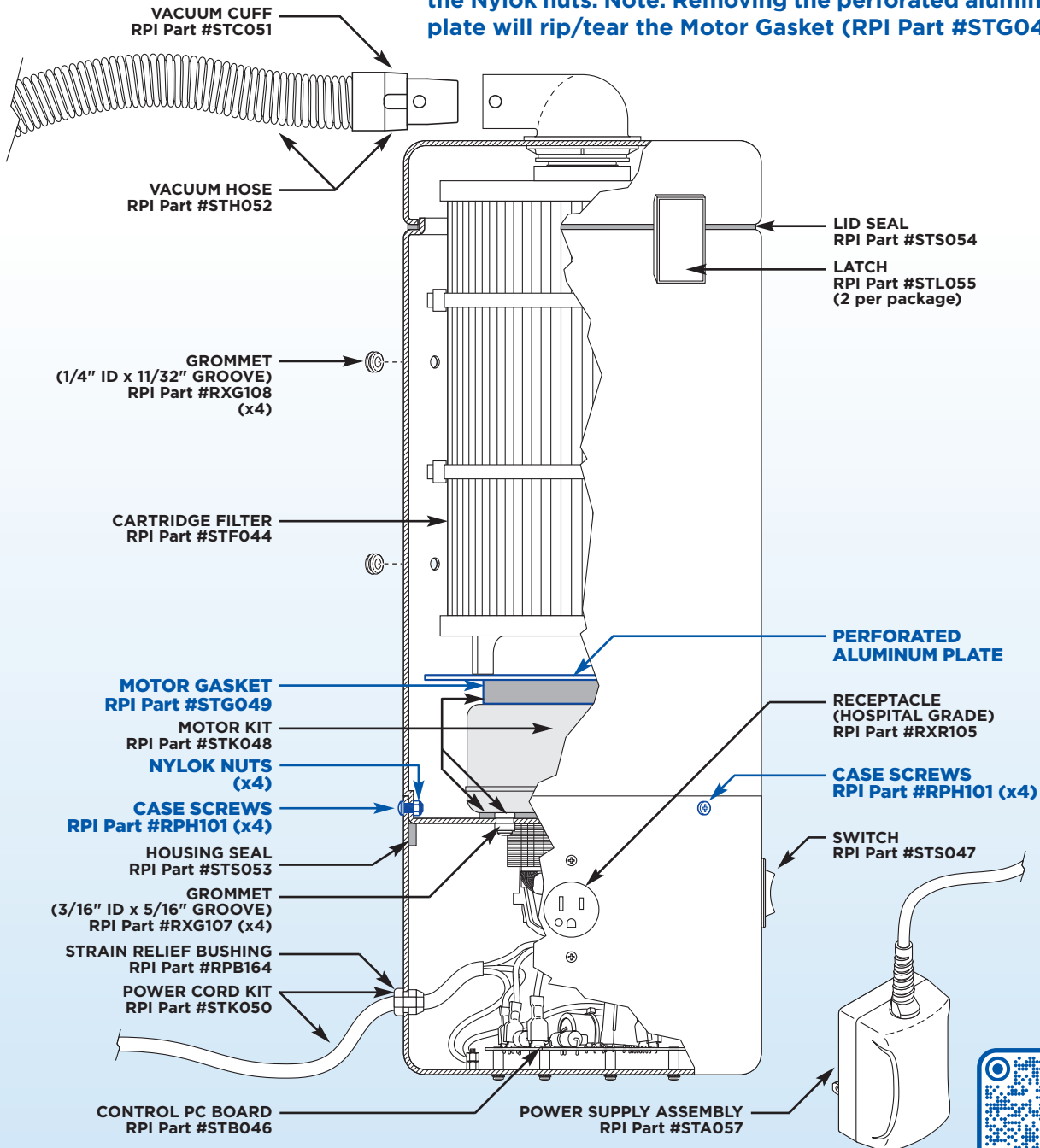
New Parts to fit

# Stryker® 900 Series

Plaster Vacuums & Cast Cutters

## Did You Know?

To remove the case screws for the Stryker 986 CastVac™, simply remove the perforated aluminum plate to access the Nylok nuts. Note: Removing the perforated aluminum plate will rip/tear the Motor Gasket (RPI Part #STG049).



replacement parts industries, inc. A Healthcare Components Group Company

CALL (800) 221-9723 • FAX (818) 882-7028 • EMAIL [order@rpiparts.com](mailto:order@rpiparts.com) • WEBSITE [www.rpiparts.com](http://www.rpiparts.com)

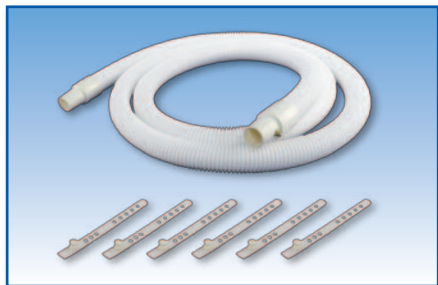
The above parts are manufactured by Replacement Parts Industries, Inc. to fit the equipment noted. All product names used in this document are trademarks or registered trademarks of their respective holders. 2131ST Web 01/23

SECTION  
9

PAGE  
308

UPDATED  
01/23

**rpi** Parts to fit Stryker® 900 Series Plaster Vacuums



**RPI Part #STH052**  
**OEM Part #986-1-30**

**VACUUM HOSE**

- 104" lg., 1.0" OD, White
- Includes: (2 pcs) Vacuum Cuff (RPI Part #STC051) and (6 pcs) Cord Strap (White 6") (RPI Part #RPS672)

**Fits:** Chassis

**Models:** 986, 987 & 996



**RPI Part STK048**  
**OEM Part #** (No OEM Part # Available)

**MOTOR KIT**

- 120VAC, thru-flow discharge, single speed, double ball bearings
- Includes: Motor Gasket (RPI Part #STG049), (1 pkg) Grommet (3/16" ID x 5/16" Groove) (RPI Part #RXG107), and mounting hardware

**Fits:** Chassis

**Models:** 986 & 987



x2

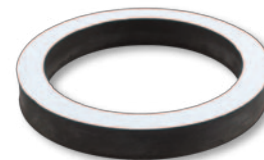
**RPI Part #STC051**  
**OEM Part #** (No OEM Part # Available)

**VACUUM CUFF**

- 2 per package
- Size: 1" dia., white TPE
- Includes: Lock button and spring
- Included in: Vacuum Hose (RPI Part #STH052)

**Fits:** Vacuum Hose

**Models:** 986, 987 & 996



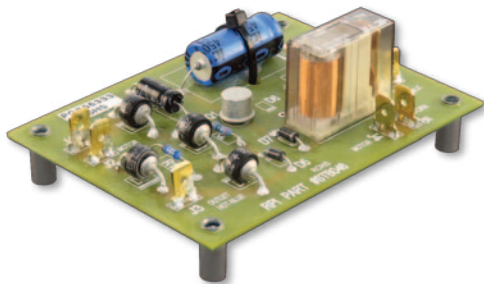
**RPI Part #STG049**  
**OEM Part #** (No OEM Part # Available)

**MOTOR GASKET**

- Size: 4.00" ID x 5.00" OD x .63" thk., PSA on top and bottom with release liner
- Material: Polyurethane closed cell foam
- Included in: Motor Kit (RPI Part #STK048)

**Fits:** Motor

**Models:** 986, 987 & 996



**RPI Part #STB046**  
**OEM Part #** (No OEM Part # Available)

**CONTROL PC BOARD**

- Size: 4.00" x 3.00"
- Includes: Installed 1/4" quick connect terminals and #6-32 x .50" threaded standoffs

**Fits:** Chassis

**Models:** 986 & 987

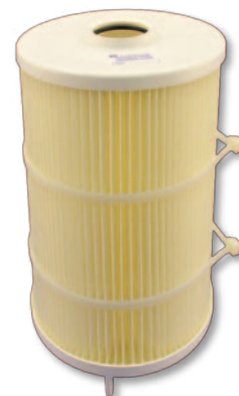
**RPI Part #STF044**  
**OEM Part #986-500**

**CARTRIDGE FILTER**

- 11 micron
- Size: 7.00" dia. x 11.38" lg.
- Includes: Filter with O-Ring

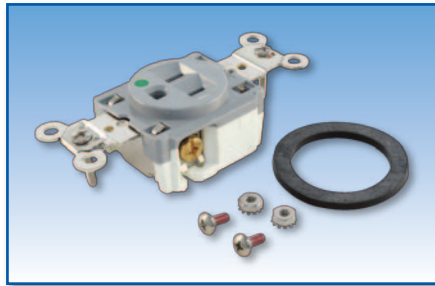
**Fits:** Vacuum Canister

**Models:** 986 Plaster Vacuum





# Parts to fit Stryker® 900 Series Plaster Vacuums

**RPI Part #RXR105**

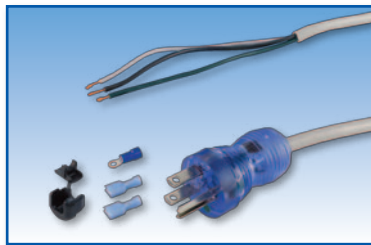
**OEM Part #** (No OEM Part # Available)

**RECEPTACLE (HOSPITAL GRADE)**

- Single hospital grade receptacle; Color: Grey
- Includes: Sealing gasket with PSA and mounting hardware as shown

**Fits:** Chassis

**Models:** 986, 987 & 996

**RPI Part #STK050**

**OEM Part #** (No OEM Part # Available)

**POWER CORD KIT**

- 12 ft. lg., 16/3 SJT, hospital grade 5/15, gray
- Includes: (1 pc) Strain Relief Bushing (RPI Part #RPB164), (2 pcs) QC Terminal (1/4 Female) (RPI Part #RPT472), and (1 pc) #6 Ring Terminal (RPI Part #RPT005)
- Also available: Strain Relief Bushing Pliers (RPI Part #RPT172)

**Fits:** Chassis

**Models:** 986

**RPI Part #RPB164**

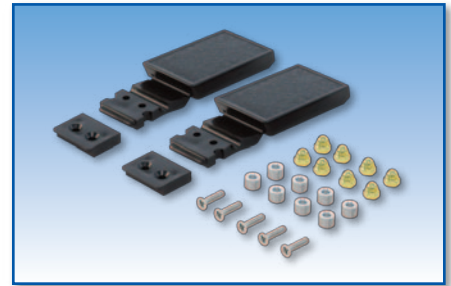
**OEM Part #** (No OEM Part # Available)

**STRAIN RELIEF BUSHING**

- 8 per package
- Type: SR-6N3-4
- Accommodates: .325" - .360" dia. round cable.
- Mounting Hole: 5/8" dia. x 1/8" thk. panel max.
- Included in: Power Cord Kit (RPI Part #STK050)
- Also available: Strain Relief Bushing Pliers (RPI Part #RPT172)

**Fits:** Vacuum Housing

**Models:** 986, 987 & 996

**RPI Part #STL055**

**OEM Part #** (No OEM Part # Available)

**LATCH**

- 2 per package
- Low profile one piece molded polypropylene; Color: Black
- Includes: Latch, keeper, and mounting hardware

**Fits:** Vacuum Canister Housing and Lid

**Models:** 986, 987 & 996

**RPI Part #STS047**

**OEM Part #** (No OEM Part # Available)

**SWITCH**

- Rocker switch (On-Off-On)
- 20A @ 125-277VAC; DPDT
- 1/4" tabs
- Panel Cutout: .830" x 1.450", .04" - .25" thk. panel

**Fits:** Vacuum Canister

**Models:** 986, 987 & 996

**RPI Part #RXG107**

**OEM Part #** (No OEM Part # Available)

**GROMMET (3/16" ID X 5/16" GROOVE)**

- 4 per package
- Material: Rubber, 55 Duro; Color: Black
- Included in: Motor Kit (RPI Part #STK048)

**Fits:** Motor Housing

**Models:** 986, 987 & 996

**RPI Part #RXG108**

**OEM Part #** (No OEM Part # Available)

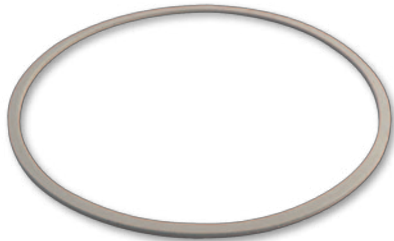
**GROMMET (1/4" ID X 11/32" GROOVE)**

- 4 per package
- Material: Rubber, 55 Duro; Color: Black

**Fits:** Vacuum Housing

**Models:** 986, 987 & 996

## rpi Parts to fit Stryker® 900 Series Plaster Vacuums



**RPI Part #STS054**

**OEM Part #** (No OEM Part # Available)

**LID SEAL**

- Size: 8.12" ID x 8.62" OD x 1/8" thk.
- Material: Grey closed cell vinyl foam with PSA backing
- Also available: Housing Seal (RPI Part #STS053)

**Fits:** Chassis

**Models:** 986, 987 & 996



**RPI Part #STS053**

**OEM Part #** (No OEM Part # Available)

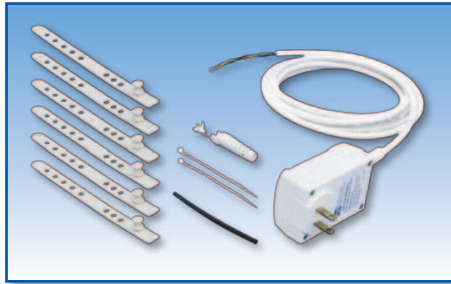
**HOUSING SEAL**

- Size: 1/2" wide x 28.0" lg. x 1/8" thk.
- Material: Black closed cell foam with PSA backing
- Includes: Installation template
- Also available: Lid Seal (RPI Part #STS054)

**Fits:** Chassis

**Models:** 986, 987 & 996

## rpi Parts to fit Stryker® 900 Series Cast Cutters



**RPI Part #STA057**

**OEM Part #** (No OEM Part # Available)

**POWER SUPPLY ASSEMBLY**

- Includes: Power Supply PCB (RPI Part #STB039), Power Cable Kit (RPI Part #STK037) and (6 pcs) Cord Strap (White 6") (RPI Part #RPS672)

**Fits:** Cast Saw Body

**Models:** 940

**For Plaster Casts!**



**RPI Part #STB043**

**OEM Part #940-25**

**CAST CUTTER BLADE**

- For plaster casts
- Size: 2.36" oval blade
- Material: Stainless steel
- Color: Silver
- Also available: Blade Guard (RPI Part #STG042)

**Fits:** Head Assembly

**Models:** 940 & 941

**For Synthetic & Plaster Casts!**



**RPI Part #STB056**

**OEM Part #940-23**

**CAST CUTTER BLADE (PiN)**

- For both plaster and synthetic casts
- Size: 2.36" oval blade
- Material: Plasma ion nitride treated stainless steel
- Color: Matte grey
- Also available: Blade Guard (RPI Part #STG042)

**Fits:** Head Assembly

**Models:** 940 & 941

**For Synthetic & Plaster Casts!**



**RPI Part #STB045**

**OEM Part #940-35**

**CAST CUTTER BLADE (TiN)**

- For both plaster and synthetic casts
- Size: 2.36" oval blade
- Material: Titanium nitride coated stainless steel
- Color: Gold
- Also available: Blade Guard (RPI Part #STG042)

**Fits:** Head Assembly

**Models:** 940 & 941