



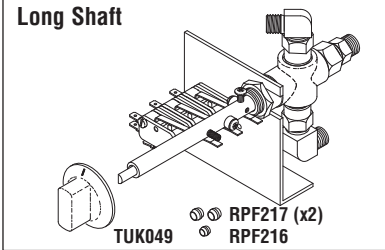
# NEW PARTS TO FIT TUTTNAUER

**IMPORTANT NOTE:** ValueKlaves manufactured with the Multi-Purpose Valves on the right side of the machine utilized either the *Long* or *Short* Shaft versions. If you have any questions regarding selection of the proper valve or repair kit for your application, please call RPI Technical Support at 800-221-9723 or email techsupport@rpiparts.com for help.

**TUTTNAUER**

## 1730, 2340, 2540 & 3870 Series

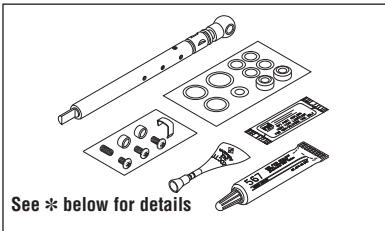
### Long Shaft



RPI Part #TUV025  
OEM Part #CT810013

#### MULTI-PURPOSE VALVE

- Valve includes *Long* shaft assembly
- Includes all parts as shown
- Fits:** Front Panel, right side of machine
- Model:** 1730M/MK, 2340M/MK, 2540M/MK & 3870M



See \* below for details

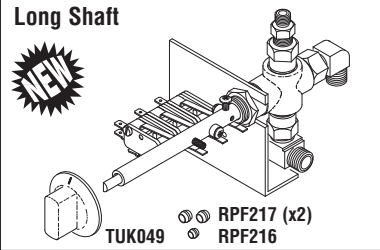
RPI Part #TUK037  
OEM Part # (No OEM Part # Available)

#### REPAIR KIT (MPV)

- Use this Kit to repair Multi-Purpose Valve Assemblies with the *Long* shaft
- Includes all parts as shown
- Fits:** Front Panel, right side of machine
- Model:** ValueKlave 1730MKV, 1730M/MK, 2340M/MK, 2540M/MK & 3870M

## ValueKlave 1730MKV

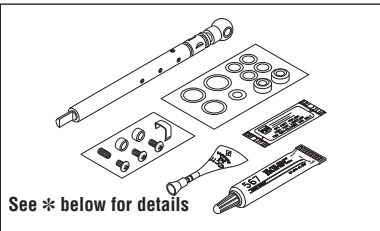
### Long Shaft



RPI Part #TUV097  
OEM Part #CMT173-0031

#### MULTI-PURPOSE VALVE

- Valve includes *Long* shaft assembly
- Includes all parts as shown
- Fits:** Front Panel, right side of machine
- Model:** ValueKlave 1730MKV



See \* below for details

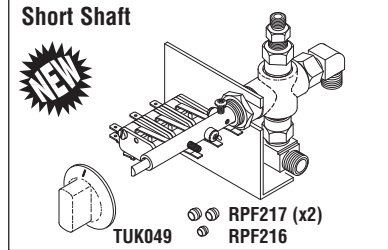
RPI Part #TUK037  
OEM Part # (No OEM Part # Available)

#### REPAIR KIT (MPV)

- Use this Kit to repair Multi-Purpose Valve Assemblies with the *Long* shaft
- Includes all parts as shown
- Fits:** Front Panel, right side of machine
- Model:** ValueKlave 1730MKV, 1730M/MK, 2340M/MK, 2540M/MK & 3870M

## ValueKlave 1730MKV

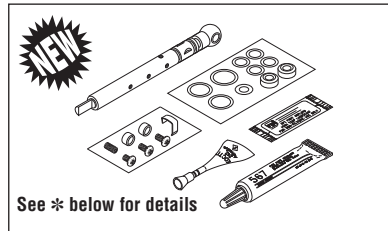
### Short Shaft



RPI Part #TUV098  
OEM Part #CMT173-0031

#### MULTI-PURPOSE VALVE

- Valve includes *Short* shaft assembly
- Includes all parts as shown
- Fits:** Front Panel, right side of machine
- Model:** ValueKlave 1730MKV

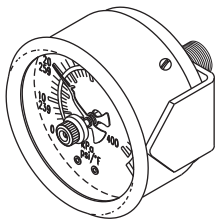


See \* below for details

RPI Part #TUK099  
OEM Part # (No OEM Part # Available)

#### REPAIR KIT (MPV)

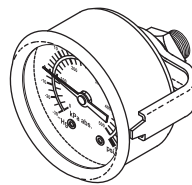
- Use this Kit to repair Multi-Purpose Valve Assemblies with the *Short* shaft
- Includes all parts as shown
- Fits:** Front Panel, **Right and Left** side mounts
- Model:** ValueKlave 1730MKV



RPI Part #TUG012  
OEM Part #02300011

#### PRESSURE GAUGE WITH INDICATOR

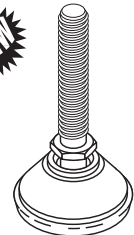
- Fits:** Front Panel
- Model:** 1730M/MK, 2340M/MK, 2540M/MK & 3870M



RPI Part #TUG020  
OEM Part #02300012

#### PRESSURE GAUGE

- Fits:** Door or Front Panel
- Model:** ValueKlave 1730MKV, 2540EHS & 3870EHS



RPI Part #TUF058  
OEM Part # 04010001 & 04010002

#### LEVELING FOOT

- Replaces the short stem foot (OEM Part #04010001) and long stem foot (OEM Part #04010002)
- Fits:** Front of machine
- Model:** EZ9, EZ10, EZ10k, ValueKlave 1730MKV, 1730E/EK/M/MK, 2340E/EA/EK/EKA/M/MK, 2540E/EA/EH/EHS/EK/EKA/M/MK & 3870E/EA/EH/EHS/M

\* Includes: Shaft, (2) Cam Spacers, Spring Clip, (2) Screw, Set Screw, (1) Screw (RPI Part #RPH130), (2) Air Release Valve Seat (RPI Part #PCS036), (4) O-Ring (RPI Part #RPO360), (1) O-Ring (RPI Part #RPO439), (1) O-Ring (RPI Part #RPO448), (2) O-Ring (RPI Part #RPO488), (1) Pipe Sealant 567 (RPI Part #RPA459), (1) Threadlocker 242 (RPI Part #RPA032), and High Temp Lubricant (RPI Part #RPL090)